



## STILLWATER HOMESITE 19

4,355 SF | 5 Bedrooms | 5 Full Baths, 2 Half Baths | 3 Car Garage |  
Finished Third Floor Recreation Room

Thoughtfully designed plan boasts LUXURY living in style! Appointments abound with site finished hardwoods, expansive trim detail, coffered, cathedral and tray ceilings. Custom upgrades and impeccable craftsmanship. Designer gourmet kitchen with built in pantry & wine fridge. Screened porch and deck backs to wooded area! Guest suite on main with private bath. Elegant owner's suite with incredible walk in closet & luxurious bath with spa. Three bedrooms upstairs each with private bath & walk in closet plus bonus room. Finished 3rd floor with wet bar. Walk-in storage, 3 car garage.



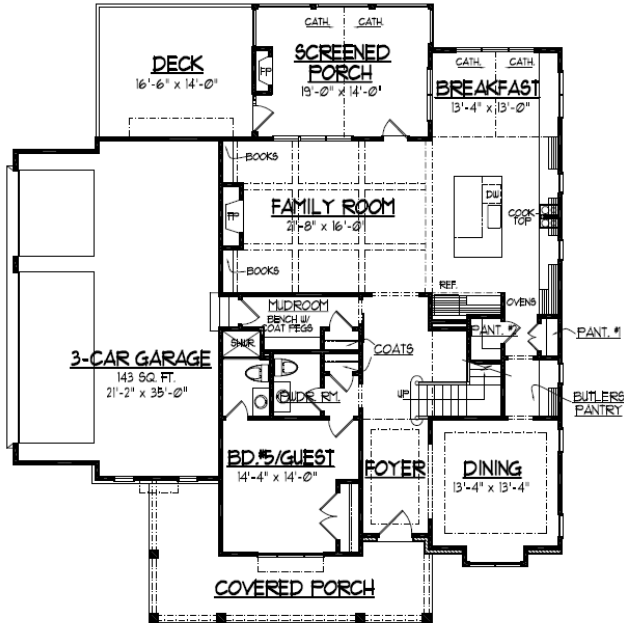
Artistic renderings and floorplans are for illustrative purposes only and are not intended to depict the exact product, materials, sizing or features. The actual finished product may or may not contain some of the features shown. All information is subject to change at any time without notice. See the onsite sales associate for complete details. Sales and Marketing by Coldwell Banker Howard Perry and Walston Builder Services.

**COLDWELL  
BANKER**  
HOWARD PERRY  
AND WALSTON  
BUILDER SERVICES

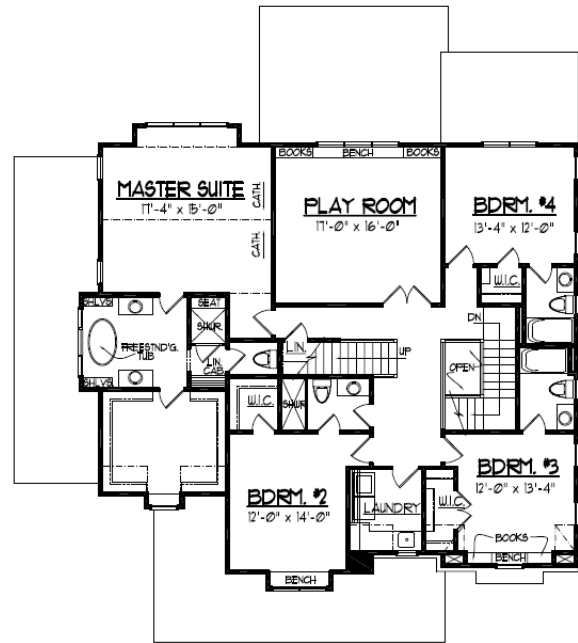
SALES INFORMATION 919.249.6162  
3108 CURLING CREEK DRIVE | APEX, NC 27502 | [STILLWATERAPEX.COM](http://STILLWATERAPEX.COM)



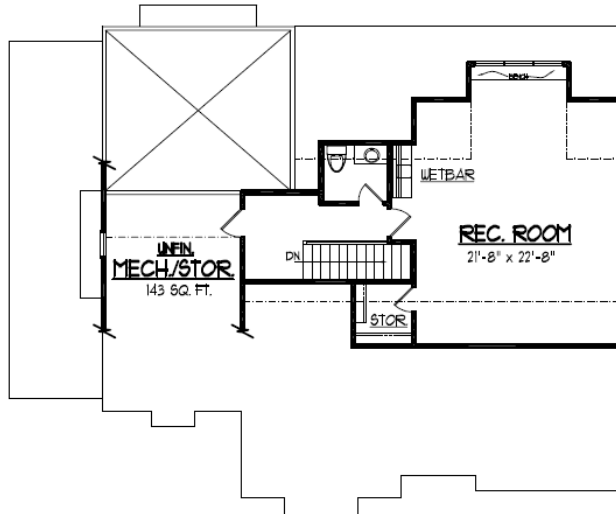
## FIRST FLOOR



## SECOND FLOOR



## FINISHED THIRD FLOOR



Artistic renderings and floorplans are for illustrative purposes only and are not intended to depict the exact product, materials, sizing or features. The actual finished product may or may not contain some of the features shown. All information is subject to change at any time without notice. See the onsite sales associate for complete details. Sales and Marketing by Coldwell Banker Howard Perry and Walston Builder Services.

