



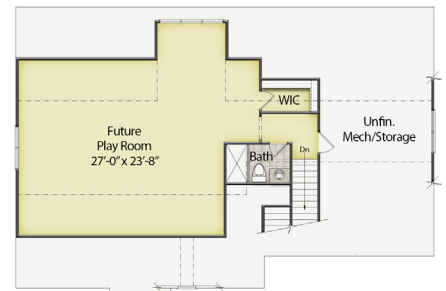
Future Homes, Homesite 63 - 3,921 SF
 1805 Center Ridge Drive • Apex, NC 27502



FIRST FLOOR



SECOND FLOOR



THIRD FLOOR



OPTIONAL MASTER BATH

SALES INFORMATION 919.249.6162 | 1832 OLD EVERGREEN DRIVE | APEX, NC 27502 | STILLWATERAPEX.COM

Artistic renderings and floorplans are for illustrative purposes only and are not intended to depict the exact product, materials, sizing or features. The actual finished product may or may not contain some of the features shown. All information is subject to change at any time without notice. See the onsite sales associate for complete details. Sales and Marketing by Coldwell Banker Howard Perry and Walston New Homes & Land.

