



## OAKWOOD II HOMESITE 46

3,564 SF | 5 Bedrooms | 4.5 Baths | Guest Bedroom on 1st Floor | 3-Car Garage  
Unfinished Third Story Walk-Up Attic

Spacious open floorplan with coffered ceilings in dining room. Gourmet Kitchen with large island and walk-in pantry opening to family room, breakfast area and screened porch just beyond. Spacious master bedroom includes walk-in closet and luxurious bath and spa area. Guest bedroom on first floor with private bath. Upstairs includes four bedrooms and bonus room. Walk-up attic for storage or future expansion.

# LEGACY

---

## CUSTOM HOMES



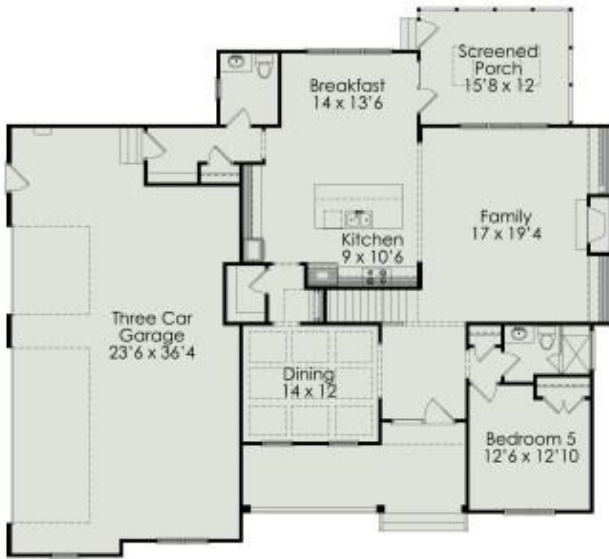
Artistic renderings and floorplans are for illustrative purposes only and are not intended to depict the exact product, materials, sizing or features. The actual finished product may or may not contain some of the features shown. All information is subject to change at any time without notice. See the onsite sales associate for complete details. Sales and Marketing by Coldwell Banker Howard Perry and Walston Builder Services.



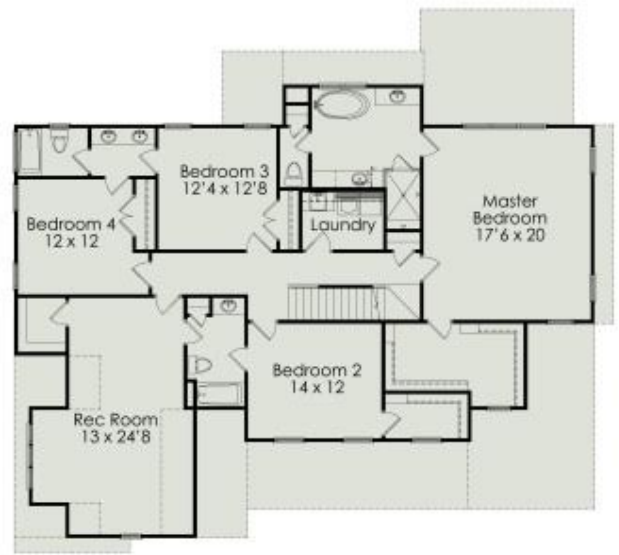
SALES INFORMATION 919.249.6162  
3108 CURLING CREEK DRIVE | APEX, NC 27502 | [STILLWATERAPEX.COM](http://STILLWATERAPEX.COM)



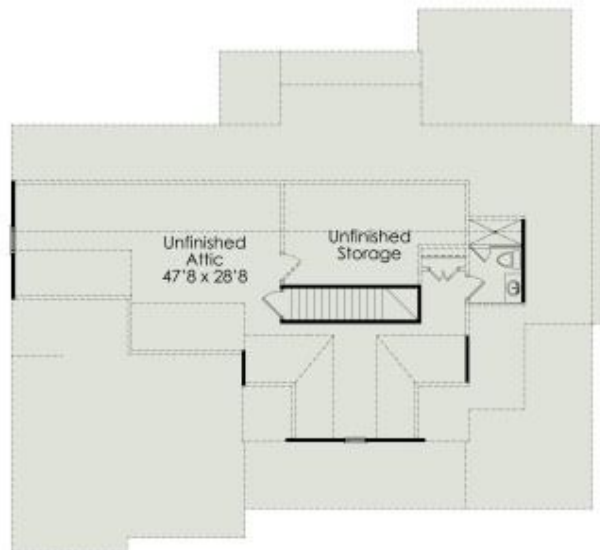
## FIRST FLOOR



## SECOND FLOOR



## UNFINISHED THIRD FLOOR



Artistic renderings and floorplans are for illustrative purposes only and are not intended to depict the exact product, materials, sizing or features. The actual finished product may or may not contain some of the features shown. All information is subject to change at any time without notice. See the onsite sales associate for complete details. Sales and Marketing by Coldwell Banker Howard Perry and Walston Builder Services.



SALES INFORMATION 919.249.6162  
3108 CURLING CREEK DRIVE | APEX, NC 27502 | STILLWATERAPEX.COM